





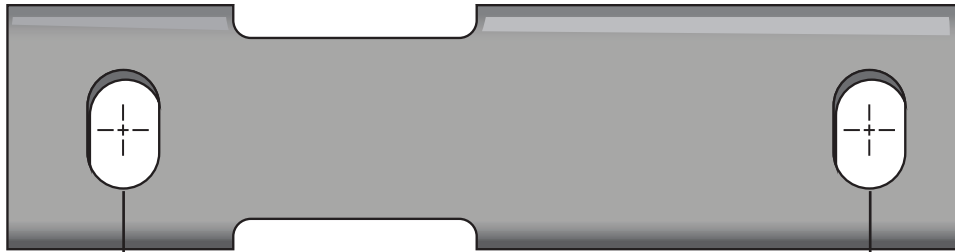
MEASUREMENTS REQUIRED FOR REUSING TORSION MOUNTS

Inboard	Top	Outside to Outside of Frame		<p>If the customer wants to attempt to reuse their old brackets, First you must determine if the bolt patterns are the same. If they are, then see this chart to determine what measurements you need to build the axle to fit.</p> <div style="text-align: center;">  <p>INBOARD</p>  <p>OUTBOARD</p> </div> <p>Mounting Bracket Directions: (choose one)</p> <p><input type="checkbox"/> Inboard (Standard)</p> <p><input type="checkbox"/> Outboard (Reverse)</p> <p><input type="checkbox"/> Inboard Mounts</p> <p style="margin-left: 20px;"><input type="checkbox"/> Side Mount Outside to outside of axle hanger: _____</p> <p style="margin-left: 20px;"><input type="checkbox"/> Top Mount Outside to outside of frame: _____</p> <p><input type="checkbox"/> Outboard Mounts</p> <p style="margin-left: 20px;"><input type="checkbox"/> Side Mount Inside to Inside of axle hanger: _____</p> <p style="margin-left: 20px;"><input type="checkbox"/> Top Mount Outside to outside of frame: _____</p>
	Side Mount	Outside to Outside of torsion axle hanger brackets		
Outboard	Top	Outside to Outside of Frame		
	Side	Inside to Inside of torsion axle hanger brackets		



AXLE BRACKET CONSTRUCTION

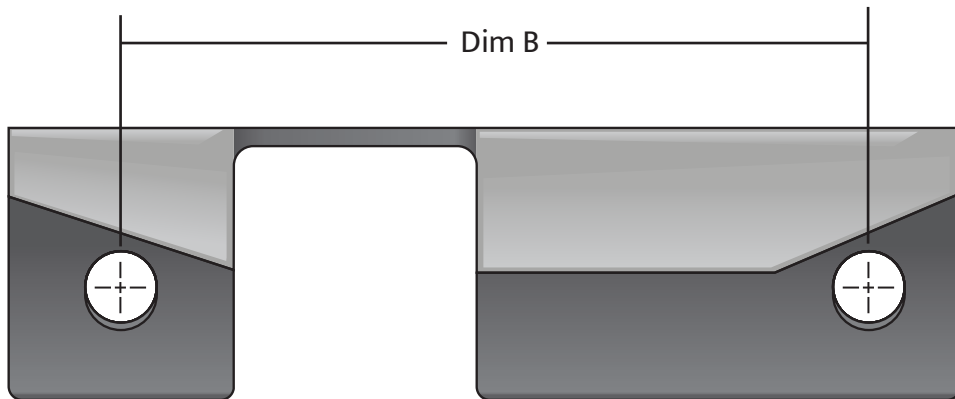
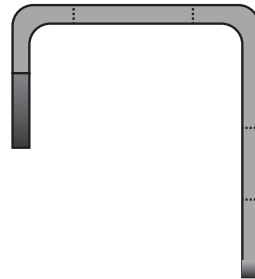
Top Mounting Holes



Dim A

Dimension A: _____

Dimension B: _____



Dim B

Side Mounting Holes

2K Brackets		
Position	C to C	Mounting Hole Diameter
Top	8"	1/2" - 9/16"
Side	8"	

3.5K Brackets		
Position	C to C	Mounting Hole Diameter
Top	8"	5/8" - 11/16"
Side	8"	

5.2 / 7K Brackets		
Position	C to C	Mounting Hole Diameter
Top	9"	5/8" - 11/16"
Side	9-1/2"	

